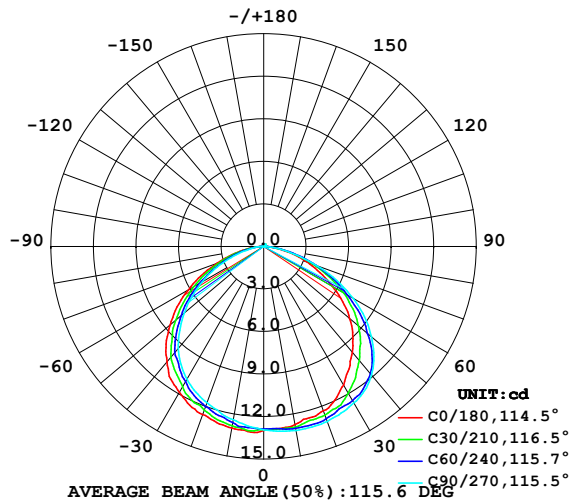


## LUMINAIRE PHOTOMETRIC TEST REPORT

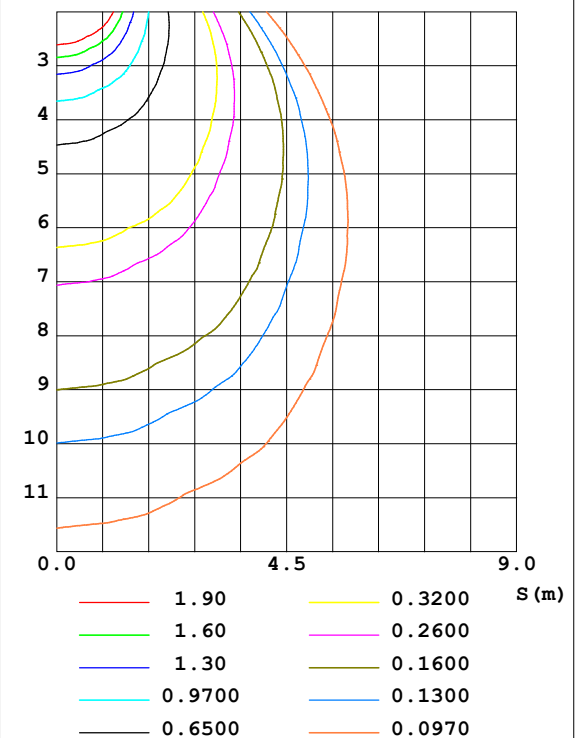
Test:U:24.00V I:0.1589A P:3.814W PF:1.000 Lamp Flux:39.4497x1 lm		
NAME: SP01-24V-5050-60-RGB-B	TYPE: 硅胶	WEIGHT:
DIM.: 15MM*7MM	SPEC.:	SERIAL No.:202301007
MFR.: OLYMPIA	SUR.:1*0.015	PROTECTION ANGLE:

DATA OF LAMP		PHOTOMETRIC DATA Eff: 10.34 lm/W			
MODEL	5050	I <sub>max</sub> (cd)	13.28	S/MH (C0/180)	1.28
NOMINAL POWER (W)	12	LOR (%)	100.0	S/MH (C90/270)	1.47
RATED VOLTAGE (V)	24	TOTAL FLUX (lm)	39.450	η UP, DN (C0-180)	0.8, 53.0
NOMINAL FLUX (lm)	39.4497	CIE CLASS	DIRECT	η UP, DN (C180-360)	0.5, 45.6
LAMPS INSIDE	1	η up (%)	1.3	CIBSE SHR NOM	1.50
TEST VOLTAGE (V)	24.0	η down (%)	98.7	CIBSE SHR MAX	1.50

LUMINOUS INTENSITY DISTRIBUTION DIAGRAM



C0 PLANE ISOLUX DIAGRAM (UNIT:lx)



C Range: 0 - 360DEG  
C Interval: 30.0DEG  
Test Speed: HIGH  
Temperature:25.3DEG  
Operators:WFW  
Test Date:2023-01-06

γ Range: 0 - 180DEG  
γ Interval: 1.0DEG  
Test System:EVERFINE GO-2000B\_V1 SYSTEM V2.0.269  
Humidity:65.0%  
Test Distance:10.800m [K=1.0000]  
Remarks:

### ZONAL FLUX DIAGRAM AND LUMINANCE LIMITATION CURVES

#### ZONAL FLUX DIAGRAM:

$\gamma$	C0	C45	C90	C135	C180	C225	C270	C315	$\gamma$	$\Phi$ zone	$\Phi$ total	%lum, lamp
10	12.75	12.98	13.18	13.20	13.00	12.73	12.41	12.47	0- 10	1.231	1.231	3.12,3.12
20	12.33	12.79	13.13	13.09	12.61	12.15	11.72	11.81	10- 20	3.581	4.812	12.2,12.2
30	11.30	12.24	12.74	12.69	11.88	11.23	10.83	10.81	20- 30	5.607	10.42	26.4,26.4
40	9.753	11.12	11.83	11.76	10.61	9.976	9.393	9.322	30- 40	6.987	17.41	44.1,44.1
50	7.912	9.150	9.936	9.734	8.620	7.850	7.330	7.320	40- 50	7.368	24.77	62.8,62.8
60	5.598	6.628	7.255	7.068	6.140	5.485	5.016	5.066	50- 60	6.534	31.31	79.4,79.4
70	3.292	3.837	4.028	4.121	3.550	3.102	2.682	2.843	60- 70	4.685	35.99	91.2,91.2
80	1.145	1.327	1.231	1.576	1.321	1.163	0.8806	0.9834	70- 80	2.406	38.40	97.3,97.3
90	0.0694	0.0624	0.0900	0.0729	0.0069	0.0313	0.0487	0.0312	80- 90	0.5290	38.93	98.7,98.7
100	0.0762	0.0727	0.0900	0.0589	0.0139	0.0242	0.0416	0.0312	90-100	0.0511	38.98	98.8,98.8
110	0.0762	0.0866	0.0970	0.0831	0.0416	0.0347	0.0416	0.0416	100-110	0.0600	39.04	99,99
120	0.0762	0.0900	0.1177	0.0866	0.0693	0.0485	0.0554	0.0520	110-120	0.0669	39.11	99.1,99.1
130	0.0623	0.1004	0.1316	0.0970	0.0901	0.0865	0.0762	0.0831	120-130	0.0734	39.18	99.3,99.3
140	0.0832	0.1143	0.1385	0.1108	0.1247	0.1072	0.0762	0.0970	130-140	0.0753	39.25	99.5,99.5
150	0.0970	0.1247	0.1662	0.1177	0.1456	0.1177	0.0899	0.1177	140-150	0.0709	39.33	99.7,99.7
160	0.1177	0.1766	0.1870	0.1385	0.1593	0.1420	0.1039	0.1385	150-160	0.0616	39.39	99.8,99.8
170	0.1592	0.1904	0.1939	0.1766	0.1871	0.1696	0.1800	0.1627	160-170	0.0450	39.43	100,100
180	0.1870	0.1939	0.1939	0.1939	0.1939	0.1974	0.1870	0.1835	170-180	0.0172	39.45	100,100
DEG	LUMINOUS INTENSITY:cd									UNIT:lm		



LUMINANCE cd/(m2)		
G (DEG)	C0/180	C90/270
85	42	43
80	66	71
75	84	96
70	96	118
65	104	135
60	112	145
55	119	152
50	123	155
45	126	155

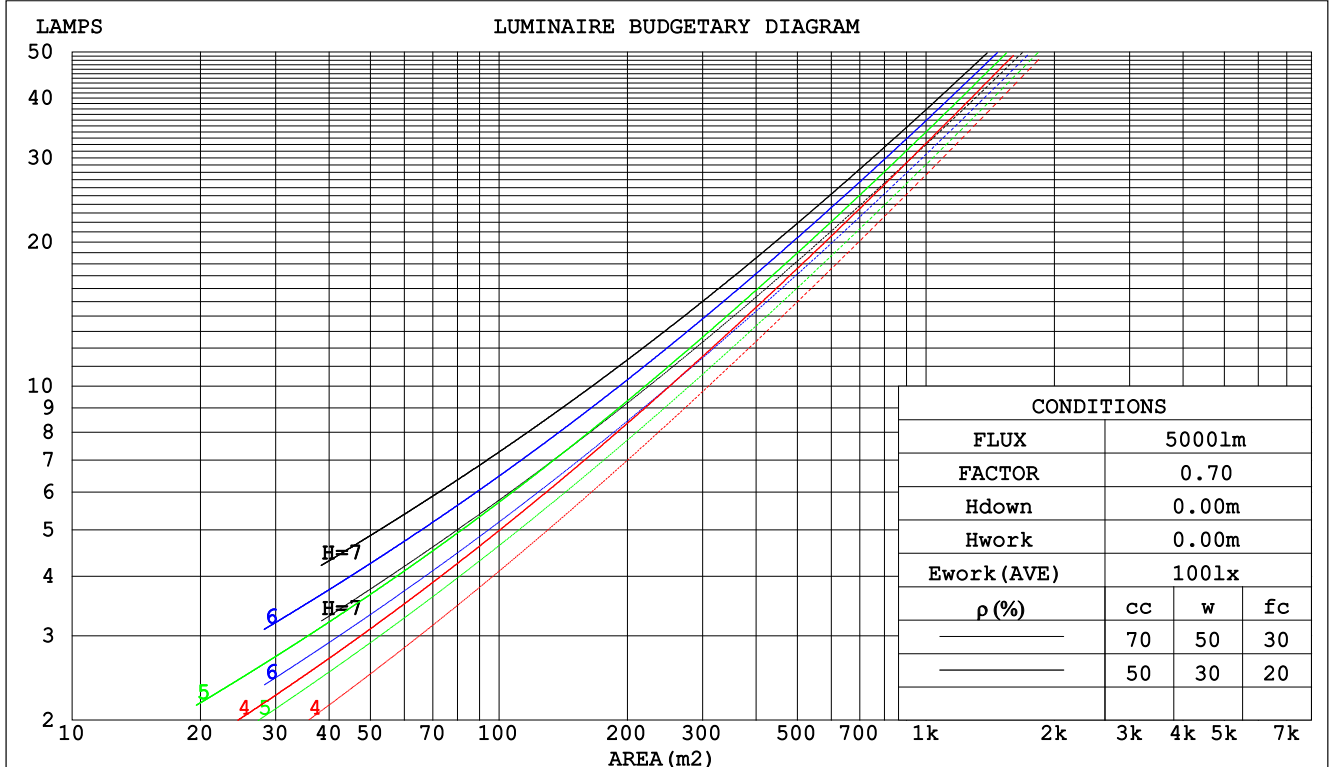
C Range: 0 - 360DEG  
C Interval: 30.0DEG  
Test Speed: HIGH  
Temperature:25.3DEG  
Operators:WFW  
Test Date:2023-01-06

$\gamma$  Range: 0 - 180DEG  
 $\gamma$  Interval: 1.0DEG  
Test System:EVERFINE GO-2000B\_V1 SYSTEM V2.0.269  
Humidity:65.0%  
Test Distance:10.800m [K=1.0000]  
Remarks:

## CU AND LUMINAIRE BUDGETARY ESTIMATE DIAGRAM

Test:U:24.00V I:0.1589A P:3.814W PF:1.000 Lamp Flux:39.4497x1 lm		
NAME: SP01-24V-5050-60-RGB-B	TYPE: 硅胶	WEIGHT:
DIM.: 15MM*7MM	SPEC.:	SERIAL No.:202301007
MFR.: OLYMPIA	SUR.:1*0.015	PROTECTION ANGLE:

$\rho_{cc}$	80%			70%			50%			30%			10%			0
$\rho_w$	50%	30%	10%	50%	30%	10%	50%	30%	10%	50%	30%	10%	50%	30%	10%	0
$\rho_{fc}$	20%			20%			20%			20%			20%			0
RCR	RCR:Room Cavity Ratio			Coefficients of Utilization(CU)												
0.0	1.19	1.19	1.19	1.16	1.16	1.16	1.10	1.10	1.10	1.05	1.05	1.05	1.01	1.01	1.01	.99
1.0	1.04	.00	.96	1.02	.98	.94	.97	.94	.91	.93	.91	.88	.89	.87	.85	.83
2.0	.91	.84	.78	.89	.83	.77	.85	.80	.75	.82	.77	.73	.78	.75	.72	.69
3.0	.80	.72	.65	.78	.70	.64	.75	.68	.63	.72	.66	.62	.69	.65	.61	.58
4.0	.70	.62	.55	.69	.61	.55	.66	.59	.54	.64	.58	.53	.62	.56	.52	.50
5.0	.63	.54	.47	.62	.53	.47	.59	.52	.46	.57	.51	.46	.55	.50	.45	.43
6.0	.56	.48	.41	.55	.47	.41	.54	.46	.40	.52	.45	.40	.50	.44	.39	.37
7.0	.51	.42	.36	.50	.42	.36	.49	.41	.36	.47	.40	.35	.46	.40	.35	.33
8.0	.47	.38	.32	.46	.38	.32	.44	.37	.32	.43	.36	.31	.42	.36	.31	.29
9.0	.43	.34	.29	.42	.34	.29	.41	.34	.29	.40	.33	.28	.38	.32	.28	.26
10.0	.39	.31	.26	.39	.31	.26	.38	.31	.26	.37	.30	.26	.36	.30	.25	.24



C Range: 0 - 360DEG  
C Interval: 30.0DEG  
Test Speed: HIGH  
Temperature:25.3DEG  
Operators:WFW  
Test Date:2023-01-06

$\gamma$  Range: 0 - 180DEG  
 $\gamma$  Interval: 1.0DEG  
Test System:EVERFINE GO-2000B\_V1 SYSTEM V2.0.269  
Humidity:65.0%  
Test Distance:10.800m [K=1.0000]  
Remarks:

## WEC AND CCEC

Test:U:24.00V I:0.1589A P:3.814W PF:1.000 Lamp Flux:39.4497x1 lm					
NAME: SP01-24V-5050-60-RGB-B			TYPE: 硅胶		WEIGHT:
DIM.: 15MM*7MM			SPEC.:		SERIAL No.:202301007
MFR.: OLYMPIA			SUR.:1*0.015		PROTECTION ANGLE:

pcc	80%			70%			50%			30%			10%			0	
pw	50%	30%	10%	50%	30%	10%	50%	30%	10%	50%	30%	10%	50%	30%	10%	0	
pfc	20%			20%			20%			20%			20%			0	
RCR	RCR:Room Cavity Ratio						Wall Exitance Coefficients(WEC)										
0.0																	
1.0	.300	.171	.054	.293	.167	.053	.279	.160	.051	.266	.154	.049	.254	.147	.048		
2.0	.286	.157	.048	.279	.154	.047	.267	.148	.046	.256	.143	.045	.245	.139	.044		
3.0	.266	.142	.042	.260	.139	.042	.249	.135	.041	.239	.131	.040	.230	.127	.039		
4.0	.247	.128	.038	.241	.126	.037	.232	.123	.037	.223	.120	.036	.214	.116	.035		
5.0	.229	.117	.034	.224	.115	.034	.215	.112	.033	.207	.109	.033	.200	.107	.032		
6.0	.212	.107	.030	.208	.105	.030	.201	.103	.030	.193	.100	.030	.187	.098	.029		
7.0	.198	.098	.028	.194	.097	.028	.187	.095	.027	.181	.093	.027	.175	.091	.027		
8.0	.185	.090	.025	.182	.090	.025	.176	.088	.025	.170	.086	.025	.164	.084	.025		
9.0	.174	.084	.023	.171	.083	.023	.165	.082	.023	.160	.080	.023	.155	.079	.023		
10.0	.163	.078	.022	.161	.078	.022	.156	.076	.021	.151	.075	.021	.146	.074	.021		

pcc	80%			70%			50%			30%			10%			0
pw	50%	30%	10%	50%	30%	10%	50%	30%	10%	50%	30%	10%	50%	30%	10%	0
pfc	20%			20%			20%			20%			20%			0
RCR	RCR:Room Cavity Ratio						Ceiling Cavity Exitance Coefficients(CCEC)									
0.0	.201	.201	.201	.171	.171	.171	.117	.117	.117	.067	.067	.067	.021	.021	.021	
1.0	.190	.166	.145	.162	.143	.125	.111	.098	.086	.064	.057	.050	.020	.018	.016	
2.0	.182	.142	.109	.156	.122	.094	.107	.085	.066	.061	.049	.039	.020	.016	.013	
3.0	.174	.125	.085	.149	.107	.074	.102	.075	.052	.059	.044	.031	.019	.014	.010	
4.0	.167	.111	.069	.143	.096	.060	.098	.067	.042	.057	.039	.025	.018	.013	.008	
5.0	.159	.101	.058	.137	.087	.050	.094	.061	.035	.055	.036	.021	.018	.012	.007	
6.0	.152	.093	.050	.131	.080	.043	.090	.056	.031	.052	.033	.018	.017	.011	.006	
7.0	.146	.086	.044	.125	.074	.038	.086	.052	.027	.050	.031	.016	.016	.010	.005	
8.0	.139	.080	.039	.120	.069	.034	.083	.049	.024	.048	.029	.014	.016	.009	.005	
9.0	.133	.075	.036	.115	.065	.031	.079	.046	.022	.046	.027	.013	.015	.009	.004	
10.0	.128	.071	.033	.110	.061	.029	.076	.043	.020	.044	.026	.012	.014	.008	.004	

C Range: 0 - 360DEG  
C Interval: 30.0DEG  
Test Speed: HIGH  
Temperature:25.3DEG  
Operators:WFW  
Test Date:2023-01-06

γ Range: 0 - 180DEG  
γ Interval: 1.0DEG  
Test System:EVERFINE GO-2000B\_V1 SYSTEM V2.0.269  
Humidity:65.0%  
Test Distance:10.800m [K=1.0000]  
Remarks:

## Uncorrected UGR Table

Test:U:24.00V I:0.1589A P:3.814W PF:1.000 Lamp Flux:39.4497x1 lm										
NAME: SP01-24V-5050-60-RGB-B					TYPE: 硅胶			WEIGHT:		
DIM.: 15MM*7MM					SPEC.:			SERIAL No.:202301007		
MFR.: OLYMPIA					SUR.:1*0.015			PROTECTION ANGLE:		
ceiling/cavity	0.7	0.7	0.5	0.5	0.3	0.7	0.7	0.5	0.5	0.3
walls	0.5	0.3	0.5	0.3	0.3	0.5	0.3	0.5	0.3	0.3
working plane	0.2	0.2	0.2	0.2	0.2	0.2	0.2	0.2	0.2	0.2
Room dimensions	Viewed crosswise					Viewed endwise				
x = 2H y = 2H	5.7	7.2	6.0	7.5	7.7	6.7	8.2	6.9	8.4	8.6
3H	7.0	8.4	7.3	8.6	8.9	8.0	9.4	8.3	9.6	9.9
4H	7.5	8.8	7.8	9.0	9.3	8.4	9.7	8.8	10.0	10.3
6H	7.7	8.9	8.1	9.2	9.5	8.6	9.9	9.0	10.2	10.5
8H	7.7	8.9	8.1	9.2	9.6	8.7	9.9	9.0	10.2	10.5
12H	7.7	8.9	8.1	9.2	9.5	8.7	9.8	9.0	10.1	10.4
4H 2H	6.4	7.8	6.8	8.0	8.3	7.1	8.5	7.5	8.7	9.0
3H	7.9	9.0	8.3	9.3	9.7	8.7	9.8	9.0	10.1	10.5
4H	8.4	9.5	8.8	9.8	10.2	9.2	10.2	9.6	10.6	11.0
6H	8.8	9.7	9.2	10.1	10.5	9.5	10.5	9.9	10.8	11.2
8H	8.9	9.7	9.3	10.1	10.5	9.6	10.4	10.0	10.8	11.2
12H	8.9	9.7	9.3	10.1	10.5	9.6	10.4	10.0	10.8	11.2
8H 4H	8.7	9.5	9.1	9.9	10.3	9.4	10.2	9.8	10.6	11.0
6H	9.1	9.9	9.6	10.3	10.7	9.8	10.5	10.3	10.9	11.4
8H	9.3	9.9	9.7	10.3	10.8	9.9	10.5	10.4	11.0	11.5
12H	9.3	9.9	9.8	10.3	10.8	10.0	10.5	10.5	11.0	11.5
12H 4H	8.7	9.5	9.1	9.9	10.3	9.4	10.1	9.8	10.6	11.0
6H	9.2	9.8	9.7	10.2	10.7	9.8	10.5	10.3	10.9	11.4
8H	9.3	9.9	9.8	10.3	10.8	10.0	10.5	10.5	11.0	11.5
Variations with the observer position at spacings:										
S = 1.0H	+ 0.2 / - 0.3					+ 0.2 / - 0.2				
1.5H	+ 0.3 / - 0.5					+ 0.2 / - 0.4				
2.0H	+ 0.2 / - 0.5					+ 0.3 / - 0.4				

CIE Pub.117 Corrected 39.45 lm Total Lamp Luminous Flux. (8log(F/F0) = -11.2)

C Range: 0 - 360DEG  
 C Interval: 30.0DEG  
 Test Speed: HIGH  
 Temperature:25.3DEG  
 Operators:WFW  
 Test Date:2023-01-06

γ Range: 0 - 180DEG  
 γ Interval: 1.0DEG  
 Test System:EVERFINE GO-2000B\_V1 SYSTEM V2.0.269  
 Humidity:65.0%  
 Test Distance:10.800m [K=1.0000]  
 Remarks:

## UTILIZATION FACTORS TABLE

Test:U:24.00V I:0.1589A P:3.814W PF:1.000 Lamp Flux:39.4497x1 lm		
NAME: SP01-24V-5050-60-RGB-B	TYPE: 硅胶	WEIGHT:
DIM.: 15MM*7MM	SPEC.:	SERIAL No.:202301007
MFR.: OLYMPIA	SUR.:1*0.015	PROTECTION ANGLE:

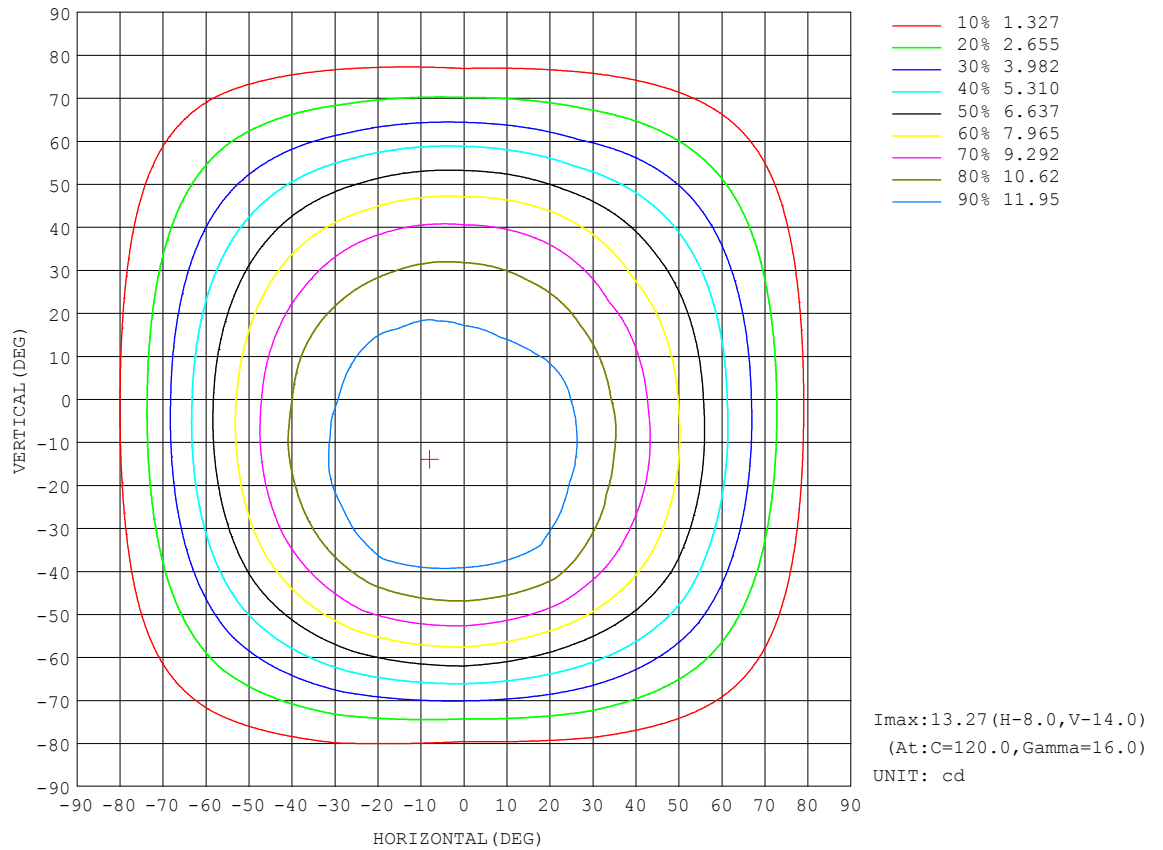
REFLECTANCE										
Ceiling	0.8	0.8	0.8	0.7	0.7	0.7	0.5	0.5	0.5	0
Walls	0.7	0.5	0.3	0.7	0.5	0.3	0.7	0.5	0.3	0
Working plane	0.2	0.2	0.2	0.2	0.2	0.2	0.2	0.2	0.2	0
ROOM INDEX	UTILIZATION FACTORS (PERCENT) $k(RI) \times RCR = 5$									
$k = 0.60$	57	45	38	56	45	38	55	45	38	32
0.80	67	56	48	66	55	48	64	54	48	41
1.00	76	65	58	75	64	57	72	65	57	49
1.25	83	73	66	82	72	65	79	70	64	57
1.50	88	78	71	86	77	71	83	75	70	62
2.00	95	87	80	93	85	79	89	83	78	70
2.50	99	91	85	97	90	84	93	87	82	74
3.00	102	95	90	100	94	89	96	91	87	78
4.00	106	101	96	104	99	95	99	95	92	83
5.00	109	104	100	106	102	98	101	98	95	85
ROOM INDEX	UF(total)									Direct
According to DIN EN 13032-2 2004			Suspended					SHRNM = 1.25		

C Range: 0 - 360DEG  
 C Interval: 30.0DEG  
 Test Speed: HIGH  
 Temperature:25.3DEG  
 Operators:WFW  
 Test Date:2023-01-06

γ Range: 0 - 180DEG  
 γ Interval: 1.0DEG  
 Test System:EVERFINE GO-2000B\_V1 SYSTEM V2.0.269  
 Humidity:65.0%  
 Test Distance:10.800m [K=1.0000]  
 Remarks:

## ISOCANDELA DIAGRAM

Test:U:24.00V I:0.1589A P:3.814W PF:1.000 Lamp Flux:39.4497x1 lm		
NAME: SP01-24V-5050-60-RGB-B	TYPE: 硅胶	WEIGHT:
DIM.: 15MM*7MM	SPEC.:	SERIAL No.:202301007
MFR.: OLYMPIA	SUR.:1*0.015	PROTECTION ANGLE:

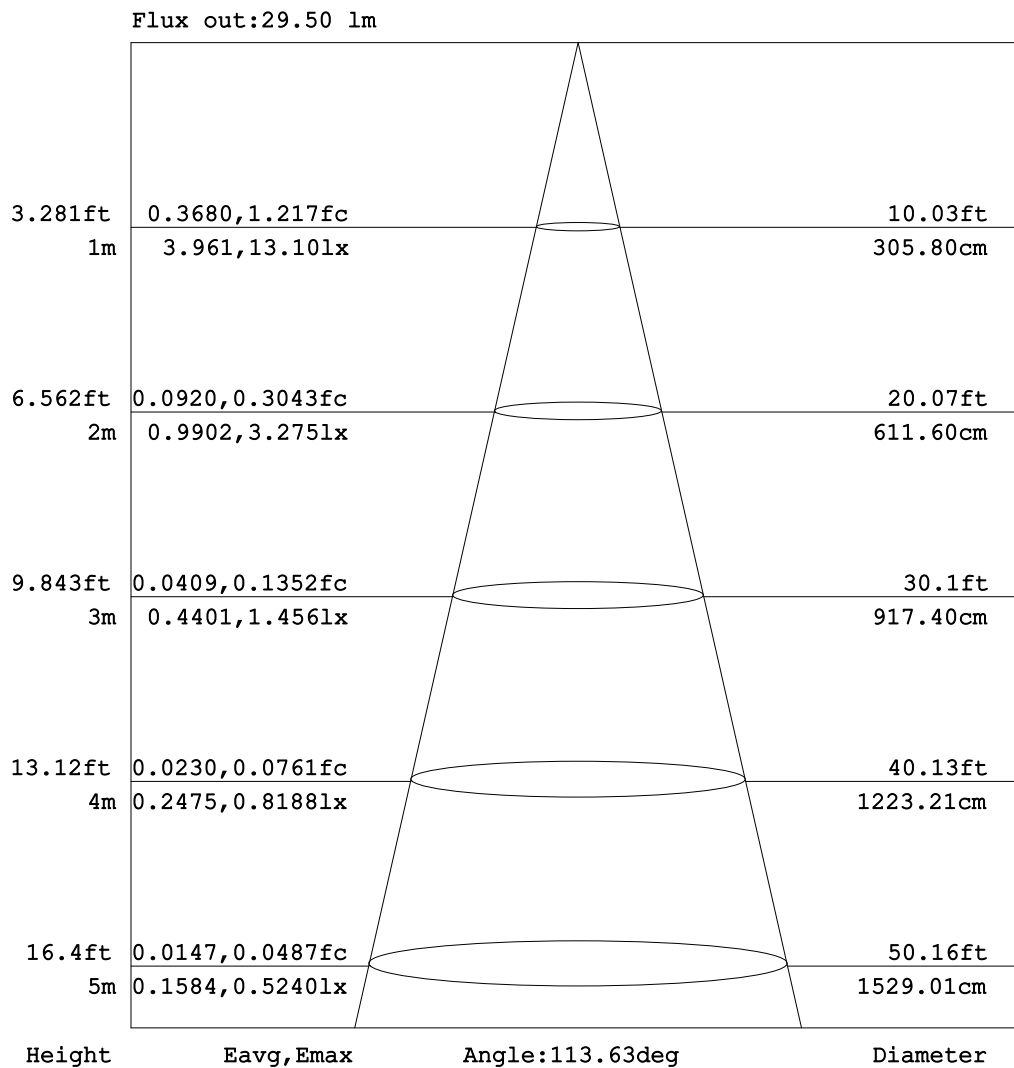


C Range: 0 - 360DEG  
C Interval: 30.0DEG  
Test Speed: HIGH  
Temperature:25.3DEG  
Operators:WFW  
Test Date:2023-01-06

$\gamma$  Range: 0 - 180DEG  
 $\gamma$  Interval: 1.0DEG  
Test System:EVERFINE GO-2000B\_V1 SYSTEM V2.0.269  
Humidity:65.0%  
Test Distance:10.800m [K=1.0000]  
Remarks:

## AAI Figure

Test:U:24.00V I:0.1589A P:3.814W PF:1.000 Lamp Flux:39.4497x1 lm		
NAME: SP01-24V-5050-60-RGB-B	TYPE: 硅胶	WEIGHT:
DIM.: 15MM*7MM	SPEC.:	SERIAL No.:202301007
MFR.: OLYMPIA	SUR.:1*0.015	PROTECTION ANGLE:



Note: The Curves indicate the illuminated area and the average illumination when the luminaire is at different distance.

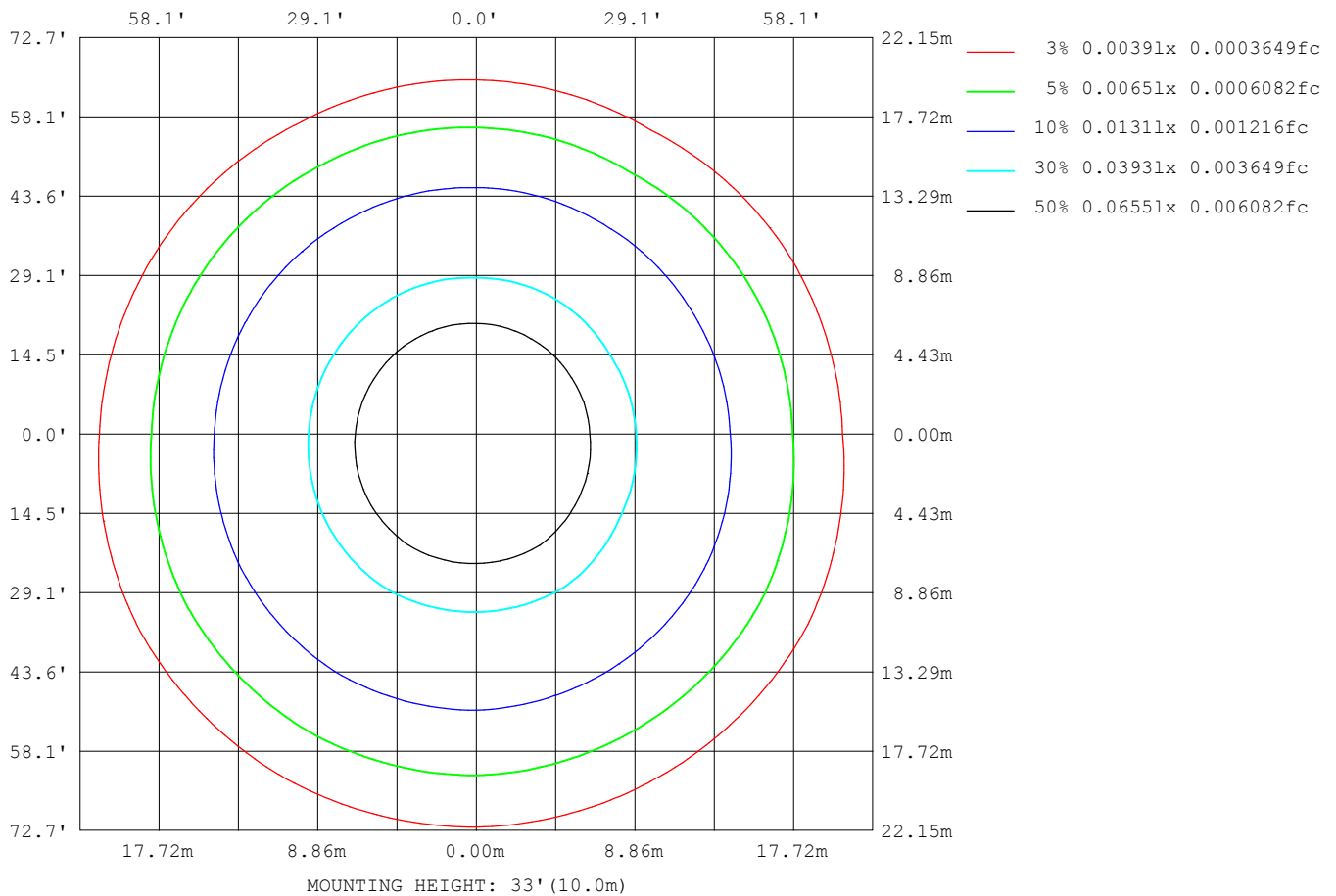
C Range: 0 - 360DEG  
C Interval: 30.0DEG  
Test Speed: HIGH  
Temperature: 25.3DEG  
Operators: WFW  
Test Date: 2023-01-06

γ Range: 0 - 180DEG  
γ Interval: 1.0DEG  
Test System: EVERFINE GO-2000B\_V1 SYSTEM V2.0.269  
Humidity: 65.0%  
Test Distance: 10.800m [K=1.0000]  
Remarks:



## ISOLUX DIAGRAM

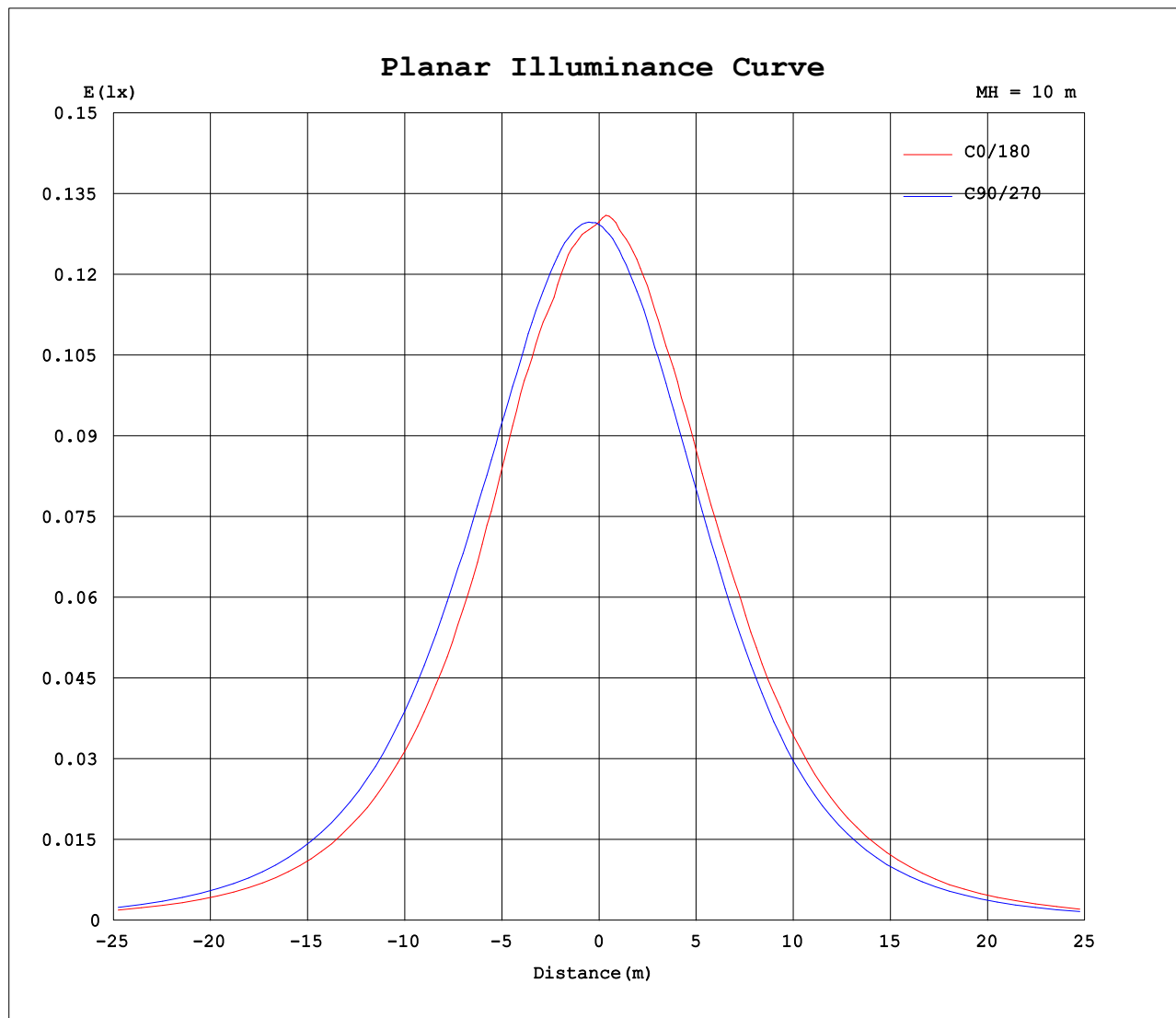
Test:U:24.00V I:0.1589A P:3.814W PF:1.000 Lamp Flux:39.4497x1 lm		
NAME: SP01-24V-5050-60-RGB-B	TYPE: 硅胶	WEIGHT:
DIM.: 15MM*7MM	SPEC.:	SERIAL No.:202301007
MFR.: OLYMPIA	SUR.:1*0.015	PROTECTION ANGLE:



C Range: 0 - 360DEG  
C Interval: 30.0DEG  
Test Speed: HIGH  
Temperature:25.3DEG  
Operators:WFW  
Test Date:2023-01-06

$\gamma$  Range: 0 - 180DEG  
 $\gamma$  Interval: 1.0DEG  
Test System:EVERFINE GO-2000B\_V1 SYSTEM V2.0.269  
Humidity:65.0%  
Test Distance:10.800m [K=1.0000]  
Remarks:

## Planar Illuminance Curve



C Range: 0 - 360DEG  
C Interval: 30.0DEG  
Test Speed: HIGH  
Temperature: 25.3DEG  
Operators: WFW  
Test Date: 2023-01-06

$\gamma$  Range: 0 - 180DEG  
 $\gamma$  Interval: 1.0DEG  
Test System: EVERFINE GO-2000B\_V1 SYSTEM V2.0.269  
Humidity: 65.0%  
Test Distance: 10.800m [K=1.0000]  
Remarks:

## LUMINOUS DISTRIBUTION INTENSITY DATA

Test:U:24.00V I:0.1589A P:3.814W PF:1.000 Lamp Flux:39.4497x1 lm		
NAME: SP01-24V-5050-60-RGB-B	TYPE: 硅胶	WEIGHT:
DIM.: 15MM*7MM	SPEC.:	SERIAL No.:202301007
MFR.: OLYMPIA	SUR.:1*0.015	PROTECTION ANGLE:

Table--1

UNIT: cd

C (DEG) γ (DEG)	0	30	60	90	120	150	180	210	240	270	300	330						
0	13.0	12.9	12.9	12.9	12.8	12.9	13.0	12.9	12.9	12.9	12.8	12.9						
5	12.9	12.9	12.9	13.1	13.2	13.1	13.1	13.0	12.8	12.7	12.6	12.7						
10	12.8	12.9	13.0	13.2	13.2	13.1	13.0	12.8	12.6	12.4	12.4	12.6						
15	12.5	12.7	13.0	13.2	13.3	13.1	12.8	12.6	12.3	12.1	12.1	12.1						
20	12.3	12.7	12.9	13.1	13.3	12.9	12.6	12.3	12.0	11.7	11.7	11.9						
25	11.9	12.5	12.6	13.0	13.2	12.8	12.4	12.0	11.6	11.3	11.2	11.6						
30	11.3	11.9	12.5	12.7	12.9	12.5	11.9	11.4	11.0	10.8	10.7	10.9						
35	10.5	11.3	12.3	12.4	12.5	12.1	11.4	10.8	10.4	10.2	10.1	10.1						
40	9.75	10.5	11.7	11.8	12.1	11.4	10.6	10.2	9.76	9.39	9.37	9.27						
45	8.89	9.69	10.8	11.0	11.1	10.5	9.74	9.14	8.74	8.39	8.41	8.32						
50	7.91	8.73	9.57	9.94	10.0	9.46	8.62	8.13	7.57	7.33	7.26	7.38						
55	6.80	7.71	8.29	8.69	8.81	8.24	7.46	6.93	6.45	6.18	6.07	6.35						
60	5.60	6.47	6.78	7.26	7.25	6.89	6.14	5.72	5.25	5.02	4.87	5.27						
65	4.39	5.14	5.42	5.69	5.69	5.50	4.87	4.48	4.02	3.84	3.72	4.11						
70	3.29	3.73	3.94	4.03	4.18	4.06	3.55	3.31	2.90	2.68	2.71	2.97						
75	2.17	2.44	2.60	2.48	2.79	2.71	2.34	2.23	1.93	1.65	1.78	1.95						
80	1.14	1.29	1.37	1.23	1.61	1.54	1.32	1.26	1.07	0.88	0.93	1.03						
85	0.37	0.37	0.44	0.37	0.63	0.60	0.46	0.49	0.38	0.34	0.28	0.33						
90	0.07	0.06	0.06	0.09	0.08	0.07	0.01	0.03	0.03	0.05	0.03	0.03						
95	0.06	0.07	0.06	0.09	0.05	0.06	0.01	0.01	0.03	0.04	0.04	0.01						
100	0.08	0.08	0.06	0.09	0.05	0.07	0.01	0.01	0.03	0.04	0.05	0.01						
105	0.08	0.09	0.07	0.09	0.07	0.09	0.03	0.01	0.05	0.04	0.06	0.01						
110	0.08	0.10	0.07	0.10	0.07	0.10	0.04	0.01	0.06	0.04	0.07	0.01						
115	0.08	0.11	0.07	0.11	0.07	0.10	0.06	0.01	0.07	0.04	0.08	0.01						
120	0.08	0.11	0.07	0.12	0.07	0.10	0.07	0.01	0.08	0.06	0.09	0.01						
125	0.06	0.13	0.07	0.13	0.07	0.12	0.08	0.03	0.10	0.07	0.10	0.03						
130	0.06	0.13	0.07	0.13	0.07	0.12	0.09	0.06	0.12	0.08	0.11	0.06						
135	0.08	0.13	0.08	0.14	0.08	0.12	0.11	0.06	0.12	0.08	0.12	0.06						
140	0.08	0.15	0.08	0.14	0.08	0.15	0.12	0.07	0.15	0.08	0.13	0.06						
145	0.09	0.16	0.08	0.14	0.09	0.15	0.13	0.07	0.15	0.08	0.14	0.08						
150	0.10	0.16	0.09	0.17	0.09	0.15	0.15	0.08	0.16	0.09	0.16	0.08						
155	0.10	0.18	0.10	0.17	0.10	0.18	0.16	0.09	0.17	0.10	0.17	0.08						
160	0.12	0.19	0.17	0.19	0.10	0.17	0.16	0.10	0.18	0.10	0.18	0.10						
165	0.14	0.19	0.17	0.19	0.12	0.19	0.19	0.12	0.18	0.13	0.19	0.10						
170	0.16	0.20	0.18	0.19	0.16	0.19	0.19	0.16	0.18	0.18	0.19	0.13						
175	0.16	0.20	0.18	0.19	0.18	0.19	0.19	0.18	0.17	0.18	0.19	0.14						
180	0.19	0.20	0.19	0.19	0.19	0.19	0.19	0.19	0.20	0.19	0.19	0.17						

C Range: 0 - 360DEG  
C Interval: 30.0DEG  
Test Speed: HIGH  
Temperature:25.3DEG  
Operators:WFW  
Test Date:2023-01-06

γ Range: 0 - 180DEG  
γ Interval: 1.0DEG  
Test System:EVERFINE GO-2000B\_V1 SYSTEM V2.0.269  
Humidity:65.0%  
Test Distance:10.800m [K=1.0000]  
Remarks:

Photometric Data Table [cd]

G/C	0.0	30.0	60.0	90.0	120.0	150.0	180.0	210.0	240.0	270.0
0.0	12.97	12.90	12.87	12.93	12.84	12.88	12.97	12.90	12.87	12.93
3.0	12.88	12.93	12.87	13.03	13.04	13.14	13.14	13.02	12.83	12.80
6.0	12.86	12.92	12.94	13.10	13.17	13.12	13.04	12.97	12.81	12.65
9.0	12.83	12.94	13.02	13.15	13.25	13.16	13.02	12.88	12.69	12.47
12.0	12.62	12.83	13.02	13.18	13.25	13.14	12.94	12.76	12.49	12.31
15.0	12.51	12.70	13.02	13.17	13.26	13.06	12.85	12.64	12.35	12.09
18.0	12.45	12.69	13.02	13.17	13.27	12.92	12.68	12.41	12.13	11.88
21.0	12.33	12.60	12.88	13.08	13.27	12.85	12.60	12.17	11.93	11.66
24.0	12.05	12.50	12.71	13.01	13.23	12.84	12.42	12.05	11.70	11.42
27.0	11.65	12.29	12.60	12.91	13.13	12.70	12.15	11.82	11.42	11.14
30.0	11.30	11.95	12.54	12.74	12.90	12.48	11.88	11.45	11.01	10.83
33.0	10.76	11.55	12.43	12.58	12.72	12.20	11.62	11.05	10.68	10.44
36.0	10.37	11.11	12.14	12.34	12.42	11.95	11.34	10.71	10.23	10.02
39.0	9.864	10.63	11.84	11.97	12.20	11.63	10.80	10.36	9.909	9.559
42.0	9.428	10.12	11.42	11.54	11.74	11.11	10.30	9.767	9.355	8.998
45.0	8.895	9.688	10.81	10.99	11.14	10.49	9.736	9.144	8.738	8.389
48.0	8.361	9.106	10.13	10.37	10.44	9.929	9.070	8.610	8.038	7.765
51.0	7.731	8.510	9.339	9.687	9.796	9.223	8.398	7.863	7.373	7.108
54.0	7.033	7.935	8.564	8.960	9.069	8.434	7.706	7.177	6.695	6.436
57.0	6.333	7.208	7.657	8.149	8.183	7.692	6.951	6.415	5.988	5.729
60.0	5.598	6.473	6.783	7.255	7.247	6.889	6.140	5.722	5.247	5.016
63.0	4.858	5.642	5.987	6.320	6.334	6.051	5.364	4.968	4.485	4.317
66.0	4.165	4.832	5.128	5.365	5.426	5.199	4.616	4.241	3.793	3.617
69.0	3.500	4.008	4.242	4.340	4.463	4.347	3.793	3.541	3.114	2.904
72.0	2.829	3.204	3.397	3.342	3.667	3.509	3.038	2.876	2.491	2.232
75.0	2.170	2.443	2.600	2.477	2.794	2.713	2.339	2.232	1.930	1.650
78.0	1.526	1.736	1.838	1.702	2.066	1.986	1.729	1.629	1.390	1.144
81.0	0.9577	1.072	1.152	0.9955	1.381	1.328	1.148	1.096	0.9261	0.7559
84.0	0.4935	0.5249	0.5771	0.4838	0.7917	0.7740	0.6213	0.6247	0.4904	0.4305
87.0	0.1740	0.1242	0.1951	0.1657	0.3409	0.2692	0.1789	0.2297	0.1584	0.1807
90.0	0.0694	0.0623	0.0626	0.0900	0.0766	0.0691	0.0069	0.0349	0.0277	0.0487
93.0	0.0624	0.0623	0.0623	0.0900	0.0623	0.0623	0.0069	0.0139	0.0277	0.0416
96.0	0.0554	0.0693	0.0623	0.0900	0.0485	0.0625	0.0139	0.0139	0.0346	0.0416
99.0	0.0761	0.0762	0.0623	0.0900	0.0485	0.0693	0.0139	0.0139	0.0346	0.0416
102.0	0.0762	0.0831	0.0623	0.0900	0.0553	0.0762	0.0346	0.0139	0.0347	0.0416
105.0	0.0762	0.0900	0.0693	0.0900	0.0693	0.0900	0.0346	0.0139	0.0486	0.0416
108.0	0.0762	0.0901	0.0693	0.0970	0.0693	0.0902	0.0416	0.0139	0.0554	0.0416
111.0	0.0762	0.1039	0.0693	0.1039	0.0693	0.0970	0.0416	0.0139	0.0624	0.0416
114.0	0.0762	0.1108	0.0693	0.1108	0.0693	0.0970	0.0554	0.0139	0.0693	0.0416
117.0	0.0762	0.1108	0.0693	0.1177	0.0693	0.0970	0.0623	0.0139	0.0762	0.0416
120.0	0.0762	0.1108	0.0693	0.1177	0.0693	0.1040	0.0693	0.0139	0.0831	0.0554
123.0	0.0486	0.1108	0.0693	0.1177	0.0693	0.1179	0.0831	0.0208	0.0900	0.0623
126.0	0.0623	0.1316	0.0693	0.1316	0.0693	0.1247	0.0831	0.0552	0.0970	0.0761
129.0	0.0623	0.1316	0.0693	0.1316	0.0693	0.1247	0.0900	0.0554	0.1109	0.0762
132.0	0.0760	0.1316	0.0693	0.1316	0.0761	0.1247	0.0970	0.0554	0.1108	0.0762
135.0	0.0762	0.1316	0.0762	0.1385	0.0762	0.1248	0.1108	0.0554	0.1178	0.0762
138.0	0.0830	0.1317	0.0762	0.1385	0.0762	0.1386	0.1246	0.0554	0.1316	0.0762
141.0	0.0831	0.1525	0.0762	0.1385	0.0762	0.1454	0.1315	0.0693	0.1385	0.0762
144.0	0.0900	0.1593	0.0831	0.1385	0.0830	0.1454	0.1316	0.0693	0.1454	0.0762
147.0	0.0900	0.1593	0.0900	0.1457	0.0900	0.1454	0.1387	0.0693	0.1524	0.0762
150.0	0.0970	0.1593	0.0900	0.1662	0.0900	0.1454	0.1456	0.0762	0.1593	0.0899
153.0	0.1039	0.1664	0.0970	0.1731	0.0900	0.1662	0.1593	0.0831	0.1663	0.0900
156.0	0.1176	0.1801	0.1039	0.1732	0.0970	0.1731	0.1593	0.0900	0.1731	0.1038
159.0	0.1177	0.1870	0.1660	0.1939	0.1039	0.1731	0.1593	0.1038	0.1801	0.1039
162.0	0.1177	0.2008	0.1662	0.1870	0.1176	0.1801	0.1595	0.1313	0.1801	0.1107
165.0	0.1384	0.1939	0.1662	0.1939	0.1247	0.1870	0.1870	0.1247	0.1801	0.1315
168.0	0.1455	0.1940	0.1662	0.1939	0.1384	0.1871	0.1870	0.1384	0.1801	0.1662
171.0	0.1593	0.2008	0.1801	0.1939	0.1593	0.1939	0.1939	0.1799	0.1801	0.1801
174.0	0.1593	0.2008	0.1801	0.1939	0.1730	0.1939	0.1939	0.1731	0.1799	0.1801
177.0	0.1799	0.2008	0.1801	0.1939	0.1801	0.1939	0.1939	0.1939	0.1661	0.1801
180.0	0.1870	0.2008	0.1870	0.1939	0.1939	0.1939	0.1939	0.1939	0.2008	0.1870
G/C	300.0	330.0								
0.0	12.84	12.88								
3.0	12.67	12.77								
6.0	12.57	12.69								
9.0	12.42	12.61								
12.0	12.20	12.42								
15.0	12.06	12.09								
18.0	11.84	12.02								
21.0	11.59	11.88								
24.0	11.25	11.65								
27.0	10.92	11.32								
30.0	10.75	10.88								

C Range: 0 - 360DEG  
 C Interval: 30.0DEG  
 Test Speed: HIGH  
 Temperature: 25.3DEG  
 Operators: WFW  
 Test Date: 2023-01-06

γ Range: 0 - 180DEG  
 γ Interval: 1.0DEG  
 Test System: EVERFINE GO-2000B\_V1 SYSTEM V2.0.269  
 Humidity: 65.0%  
 Test Distance: 10.800m [K=1.0000]  
 Remarks:

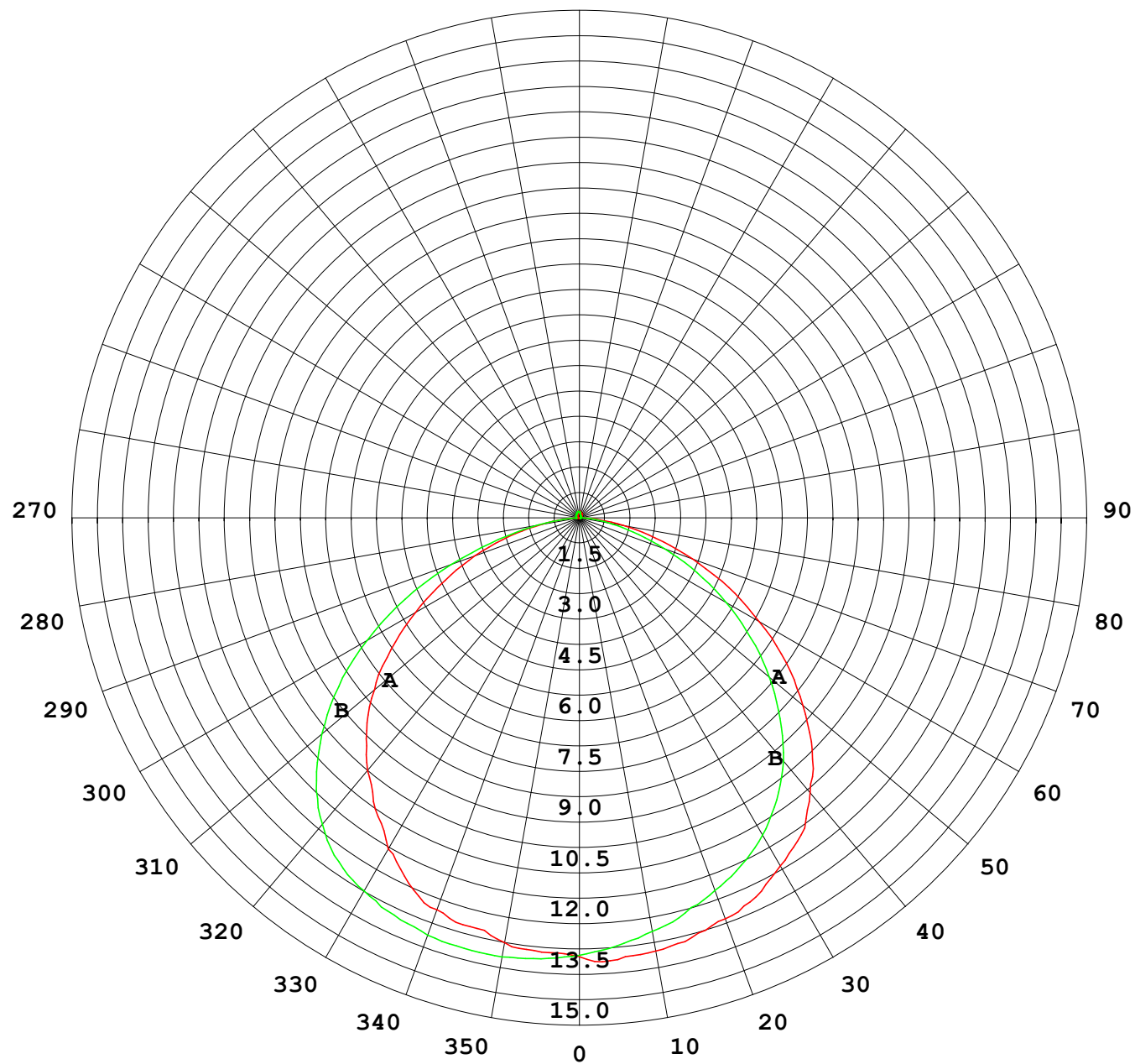
## Photometric Data Table [cd]

33.0	10.43	10.44
36.0	10.02	9.954
39.0	9.521	9.386
42.0	9.036	8.881
45.0	8.406	8.319
48.0	7.768	7.779
51.0	7.013	7.177
54.0	6.334	6.554
57.0	5.607	5.909
60.0	4.866	5.265
63.0	4.153	4.601
66.0	3.516	3.887
69.0	2.907	3.195
72.0	2.311	2.551
75.0	1.778	1.955
78.0	1.272	1.380
81.0	0.7947	0.8808
84.0	0.3933	0.4515
87.0	0.0964	0.1324
90.0	0.0346	0.0278
93.0	0.0346	0.0208
96.0	0.0416	0.0139
99.0	0.0485	0.0139
102.0	0.0554	0.0139
105.0	0.0555	0.0139
108.0	0.0623	0.0139
111.0	0.0761	0.0139
114.0	0.0693	0.0139
117.0	0.0762	0.0139
120.0	0.0901	0.0139
123.0	0.0900	0.0208
126.0	0.0970	0.0346
129.0	0.0971	0.0485
132.0	0.1108	0.0554
135.0	0.1179	0.0554
138.0	0.1247	0.0554
141.0	0.1385	0.0692
144.0	0.1385	0.0762
147.0	0.1386	0.0762
150.0	0.1593	0.0762
153.0	0.1662	0.0762
156.0	0.1731	0.0831
159.0	0.1801	0.1038
162.0	0.1870	0.1038
165.0	0.1870	0.1039
168.0	0.1939	0.1108
171.0	0.1939	0.1316
174.0	0.1939	0.1316
177.0	0.1939	0.1454
180.0	0.1939	0.1731

C Range: 0 - 360DEG  
C Interval: 30.0DEG  
Test Speed: HIGH  
Temperature: 25.3DEG  
Operators: WFW  
Test Date: 2023-01-06

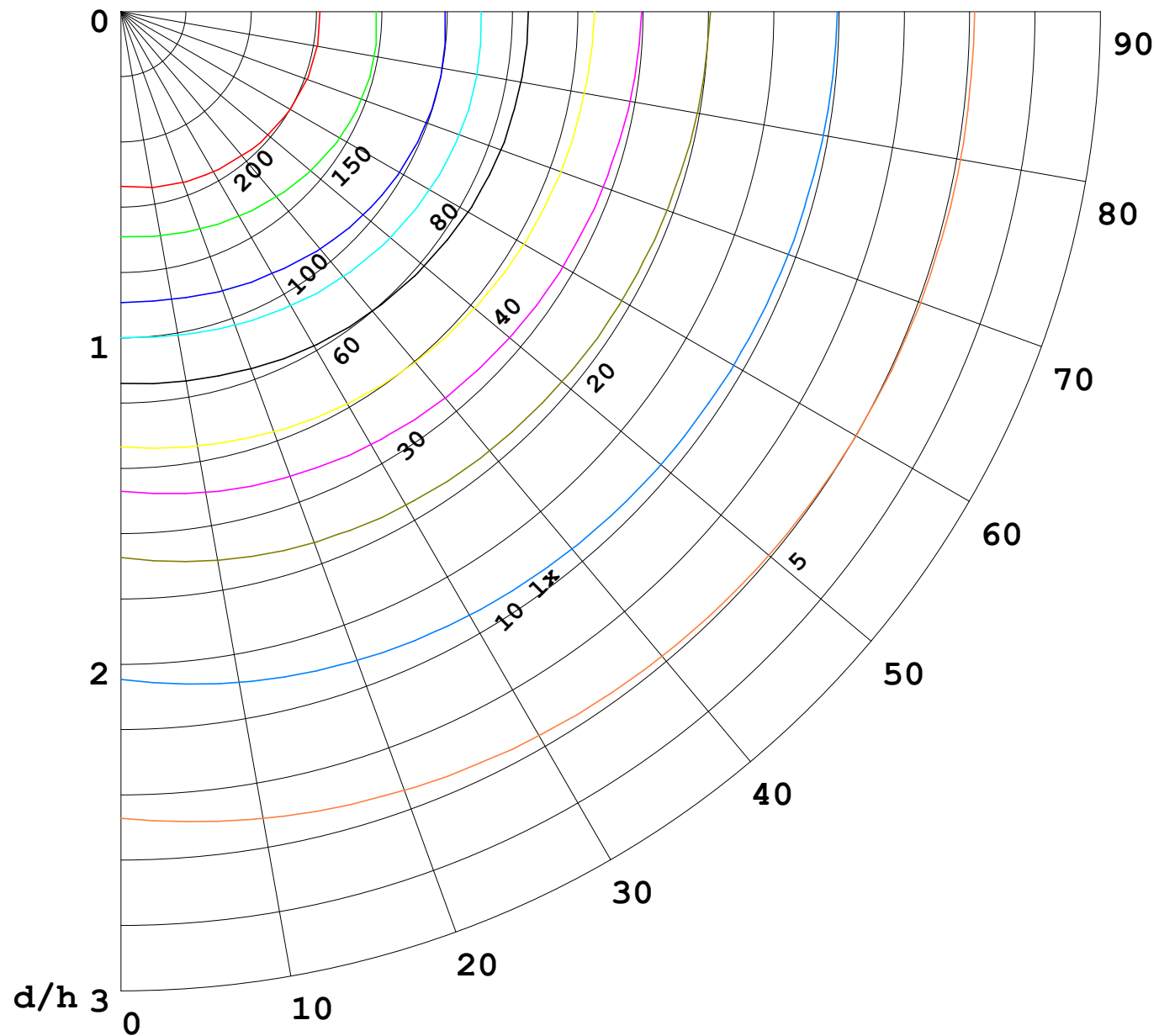
γ Range: 0 - 180DEG  
γ Interval: 1.0DEG  
Test System: EVERFINE GO-2000B\_V1 SYSTEM V2.0.269  
Humidity: 65.0%  
Test Distance: 10.800m [K=1.0000]  
Remarks:

I (cd)



1000 lm

$\kappa = 1$



F = 5000 lm  
 K = 0.7  
 Hcc = 0.0 m  
 Hfc = 0.0 m  
 Eave = 100 lx

	Pcc	Pw	Pfc
—	70	50	30
—	50	30	20

